



中洪机械



手机画册
Mobile album



佛山市南海中洪机械设备厂

FOSHAN NANHAI ZHONGHONG MACHINERY EQUIPMENT FACTORY



地址:广东佛山市南海松夏科技园科技中路6号
No.6, Keji Middle Road, Songxia Industrial Park, Nanhai District, Foshan City, Guangdong



手机(Mobile): +86 13433222419
销售电话(Sales hotline): +86 18664250804 (Wechat / Whatsapp)



邮箱(E-mail): zhjx8118@163.com
销售邮箱(Sales E-mail): zhonghongsales@163.com



网址(Website): www.zhonghongmachinery.com



**A LEADING
MANUFACTURER
SPECIALIZING IN THE
RESEARCH, DEVELOPMENT,
PRODUCTION AND SALES OF
CANDY EQUIPMENT**

一家集研发、生产与销售为一体的
专业糖果设备制造商





20+ 年
生产经验
Production experience

2000+ m²
生产厂房
Production plant

30+ 台
专业设备
Professional equipment

ABOUT US

关于我们

佛山市南海中洪机械设备厂，成立于 2005 年，是一家集研发、生产与销售为一体的专业糖果设备制造商。公司位于拥有 1300 多年历史的广东佛山市，享有得天独厚的地理优势。

凭借强大的技术力量、先进的数控加工设备以及一支高素质的研发与生产团队，我们始终致力于为全球客户提供稳定、可靠、高效且高质量的糖果设备，奠定了公司稳固的发展基础。

自公司成立以来，我们坚持“专业、专注、创新”的理念，秉承锐意进取的精神，经过多年的技术积累与持续改进，成功研发出一系列具有自主知识产权的专利产品，包括球形泡泡糖生产线和方形夹心泡泡糖生产线。这些产品的技术先进性、稳定性与产能表现已获得国内外客户的一致好评。

随着公司持续扩展，我们在海外已投资建设了多家工厂，并成功建立了数十条生产线，员工规模已达到数百人。我们的产品不仅畅销全国各地，还出口至亚洲、非洲、南美洲等众多国家和地区，深受全球知名品牌的青睐。

佛山市南海中洪机械设备厂始终秉持“专业、专注、创新”的理念，并以优质的售后服务为客户提供全方位的支持与保障，承诺为每一位客户提供优质的体验。

FOSHAN NANHAI ZHONGHONG MACHINERY EQUIPMENT FACTORY, established in 2005, is a leading manufacturer specializing in the research, development, production, and sales of candy equipment. Located in Foshan, Guangdong, a city with over 1300 years of history, the company enjoys an advantageous geographical position.

With a strong technical foundation, advanced CNC processing equipment, a high-caliber research and development team, we are committed to providing stable, reliable, high-efficiency, and high-quality candy production equipment, laying a solid foundation for the company's steady growth.

Since its inception, the company has adhered to the principles of "professionalism, focus, and innovation", driven by a spirit of continuous progress. After years of technical accumulation and constant improvement, we have successfully developed a series of patented products with independent intellectual property rights, including the spherical bubble gum production line and the square-shaped sandwich bubble gum production line. The technological advancements, stability, and production capacity of these products have received unanimous praise from both domestic and international customers.

As the company continues to expand, we have invested in and established multiple overseas factories, with more than dozens of production lines, and our workforce has grown to several hundred employees. Our products are not only sold throughout China but are also exported to numerous countries and regions in Asia, Africa, South America and so on, earning the trust of global brands.

FOSHAN NANHAI ZHONGHONG MACHINERY EQUIPMENT FACTORY is committed to maintaining "professionalism, focus, and innovation", while providing comprehensive after-sales services. We promise to offer the experience and support to each of our customers.

企业使命 Corporate Mission

为全球糖果制造商提供稳定、高效、智能的生产装备与解决方案。
To provide stable, efficient, and intelligent production equipment and solutions for global candy manufacturers.

经营宗旨 Business Purpose

为客户创造价值，为员工提供发展平台，为社会贡献创新力量。
To create value for clients, provide development platforms for employees, and contribute innovative strength to society.

经营理念 Management Philosophy

专业、专注、创新。
professionalism, focus, and innovation.

企业愿景 Corporate Vision

成为食品机械领域的创新者和优质合作伙伴。
To become an innovator and high-quality partner in the food machinery industry.



为您创造
超出期望
的价值!



CREATE A
VALUE BEYOND
EXPECTATIONS
FOR YOU!



PRODUCTION PLANT
工厂厂房



设备设计与制造
Equipment Design & Manufacturing

- 根据客户需求定制设计各种糖果生产线及单机设备。
- Customized design of various candy production lines and standalone equipment based on client's requirements.



安装、调试和培训
Installation, Debugging & Training

- 现场指导设备安装、调试和运行。
- 为客户操作人员提供优质的设备使用培训。
- 传授设备维护技能。
- On-site guidance for equipment installation, debugging, and operation.
- Comprehensive training for client operators on equipment usage.
- Instruction on equipment maintenance techniques.



售后服务及维护
After-sales Service & Maintenance

- 提供备件更换、定期检查等维护服务，并提供远程诊断。
- 老设备升级改造。
- Maintenance support including spare parts replacement, regular inspections, and remote diagnostics.
- Upgrade and retrofit services for aging equipment.

QUALIFICATION HONOR

资质荣誉

THE TRUST OF CUSTOMERS

STEMS FROM THE PURSUIT OF HIGH STANDARDS

客户的信任 -- 源于对高标准追求



DIRECTORY

画册目录

07 球形泡泡糖生产线
SPHERICAL BUBBLE GUM PRODUCTION LINE

09 方形夹心泡泡糖生产线
SQUARE-SHAPED SANDWICH BUBBLE GUM PRODUCTION LINE

11 挤出机/ZHJX-JCJ-100B
EXTRUDER /ZHJX-JCJ-100B

12 夹心冲压成型机/ZHJX-CYJ-450
SANDWICH STAMPING MACHINE/ZHJX-CYJ-450

13 成型机/ZHJX-CXJ-1000B
FORMING MACHINE /ZHJX-CXJ-1000B

14 冷却摇床/ZHJX-YC-650
COOLING SHAKER /ZHJX-YC-650

15 拉条机/ZHJX-LTJ-450
ROPE SIZER/ZHJX-LTJ-450

16 冷却输送带/ZHJX-SSD-600
COOLING CONVEYOR BELT/ZHJX-SSD-600

17 夹心机/ZHJX-JXJ-300
SANDWICH MACHINE/ZHJX-JXJ-300

18 搅拌机/ZHJX-JBJ-500L
MIXER/ZHJX-JBJ-500L

19 压片机/ZHJX-YPJ-400
TABLET PRESS MACHINE/ZHJX-YPJ-400

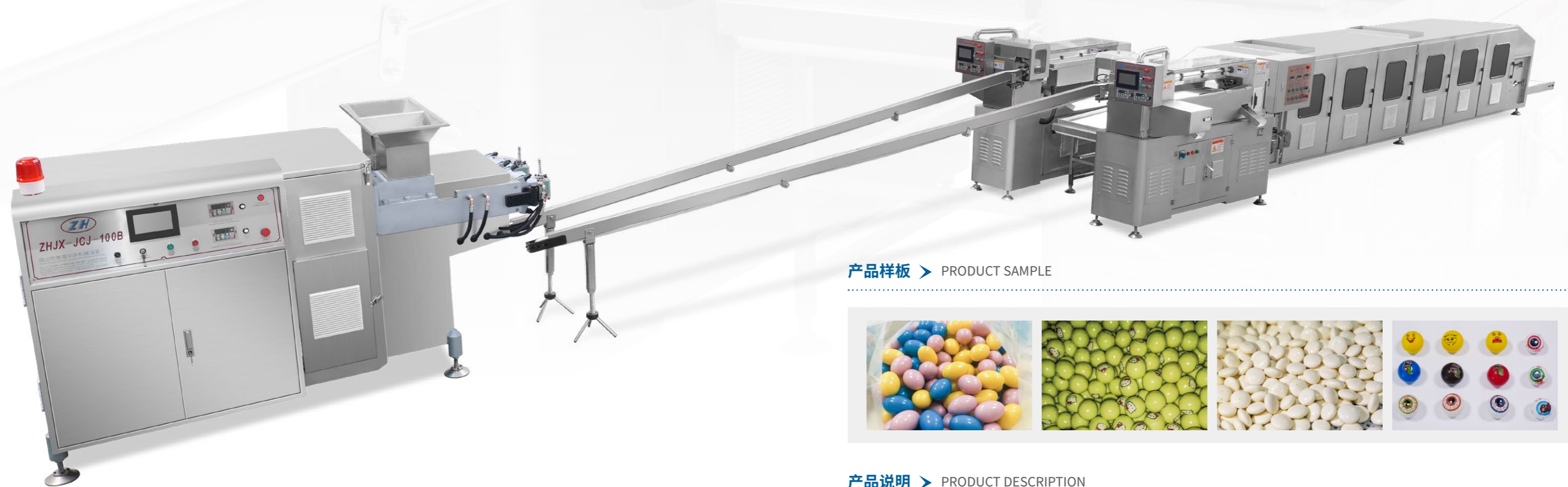
20 包衣机/ZHJX-BYJ-1000
COATING MACHINE/ZHJX-BYJ-1000

21 化糖锅/ZHJX-HTG-500
SUGAR MELTING POT/ZHJX-HTG-500

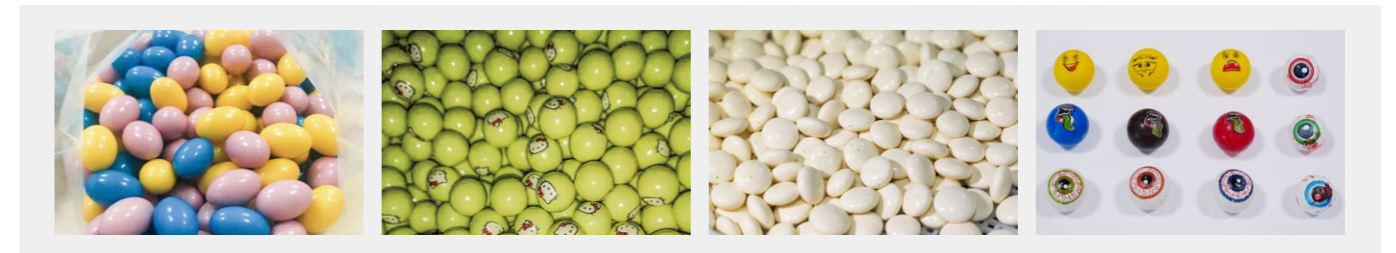
22 粉碎机/ZHJX-FSJ-40B
CRUSHER/ZHJX-FSJ-40B

球形泡泡糖生产线

SPHERICAL BUBBLE GUM PRODUCTION LINE



产品样板 > PRODUCT SAMPLE



产品说明 > PRODUCT DESCRIPTION

生产线由挤出机、成型机、糖粒输送带和冷却摇床四部分组成，是生产球形泡泡糖和硬糖的理想设备。具有操作简单、方便、性能稳定、产能高的优点。

The production line is composed of extruder, Forming machine, Candy grains conveyor belt and cooling shaker, total four parts. It is an ideal production line for producing spherical bubble gum and hard candy. It has the advantages of simple, convenient, stable and high productivity.

技术参数 > TECHNICAL PARAMETERS

| | |
|--------------------------|----------------------|
| 外形尺寸 External dimensions | L16000×W2400×H1800mm |
| 总功率 Total power | 50kW, 380V, 50Hz |
| 产量 Production | 3000kg~10000kg |
| 总重量 Total weight | 6500kg |

产线组成 > PRODUCTION LINE COMPOSITION



挤出机
Extruder

成型机
Forming machine

糖粒输送带
Candy grains conveyor belt

冷却摇床
Cooling shaker

方形夹心泡泡糖生产线

SQUARE-SHAPED SANDWICH BUBBLE GUM PRODUCTION LINE

产品说明 > PRODUCT DESCRIPTION

生产线由挤出机，糖条输送带，拉条机，冷却输送带和冲压成型机五部分组成。是生产夹心泡泡糖、夹心瑞士糖、夹心奶糖和夹心硬糖的理想生产线。具有操作简单、方便、性能稳定、产能高的优点。

The production line is composed of extruder, sugar bar conveyor belt, rope sizer, cooling conveyor belt and sandwich stamping machine, total five parts. It is an ideal production line for producing sandwich bubble gum, sandwich swiss candy, sandwich creamy candy and sandwich hard candy. It has the advantage of simple, convenient, stable and high productivity.

产线组成 > PRODUCTION LINE COMPOSITION



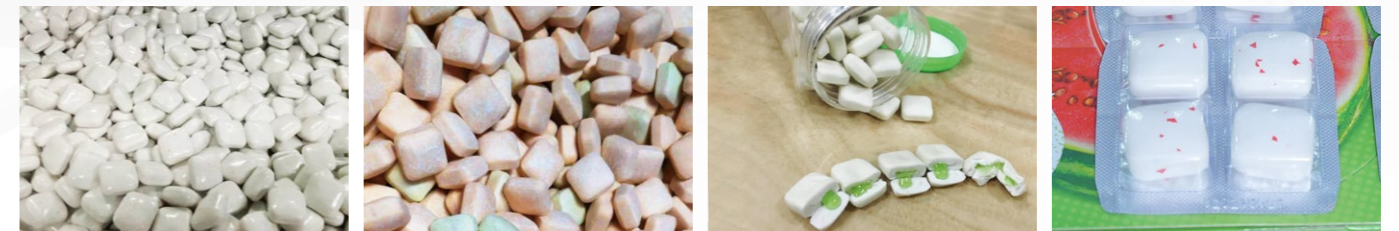
挤出机 Extruder 糖条输送带 Sugar bar conveyor belt 拉条机 Rope sizer 冷却输送带 Cooling conveyor belt 冲压成型机 Sandwich stamping machine



技术参数 > TECHNICAL PARAMETERS

| | |
|--------------------------|----------------------|
| 外形尺寸 External dimensions | L13500xW1800xH1550mm |
| 总功率 Total power | 50kw, 380V, 50Hz |
| 产量 Production | ≈3000~6000kg |
| 总重量 Total weight | ≈7000kg |

产品样板 > PRODUCT SAMPLE



挤出机/ZHJX-JCJ-100B

EXTRUDER /ZHJX-JCJ-100B

产品说明 > PRODUCT DESCRIPTION

挤出机是生产泡泡糖和瑞士糖的必备设备。采用先进的技术设计，具备高效、稳定的生产性能。其人机界面操作简便，能够满足各种规模的生产需求。此设备旨在提升生产效率，并确保产品质量的一致性。

The extruder machine is an essential piece of equipment for the production of bubble gum and Swiss candy. With advanced technology design, it offers efficient and stable performance. Featuring an easy-to-use human-machine interface, it is suitable for production lines of various scales, enhancing production efficiency while ensuring consistent product quality.



技术参数 > TECHNICAL PARAMETERS

| | |
|--------------------------|----------------------------|
| 主电机 Main motor | 7.5kW-2台/PC (380V, 50Hz) |
| 机罩 Machine hood | 304不锈钢 304 Stainless steel |
| PLC | 欧姆龙 Omron |
| 控制电器 Control appliances | 施耐德 Schneider |
| 控制面板 Control panel | 信捷 Xinjie |
| 水泵 Water pump | 0.37kW-3台/PC |
| 发热管 Heating pipe | 5kW-3条/PC |
| 挤出腔 Extrusion cavity | 整体式缎件 Integral satin |
| 外形尺寸 External dimensions | L2650xW1300xH1480mm |
| 重量 Weight | ≈2500kg |
| 总功率 Total power | 32kW |

夹心冲压成型机/ZHJX-CYJ-450

SANDWICH STAMPING MACHINE/ZHJX-CYJ-450

产品说明 > PRODUCT DESCRIPTION

夹心冲压成型机是生产夹心泡泡糖、夹心硬糖以及夹心瑞士糖的理想设备。该设备的主要特点是采用先进的气动系统和雾化喷油脱模技术，操作简便，稳定性高，特别适用于高效的糖果成型。雾化喷油系统通过均匀喷涂脱模剂，有效减少糖果与模具之间的摩擦，确保糖果顺利脱模并提高成型效率。

The sandwich stamping machine is the ideal equipment for producing sandwich bubble gum, sandwich hard candy, and sandwich Swiss candy. It features easy operation, high stability, and is especially suitable for improving the efficiency of sandwich candy production. The atomizing oil spray system reduces friction between the candy and molds, ensuring smooth demolding and increasing molding efficiency.



技术参数 > TECHNICAL PARAMETERS

| | |
|--------------------------|---------------------|
| 主电机 Main motor | 3kW (380V, 50Hz) |
| 机罩 Machine hood | 铁板喷漆 Iron painting |
| PLC | 西门子 Siemens |
| 控制电器 Control appliances | 施耐德 Schneider |
| 控制面板 Control panel | 信捷 Xin Jie |
| 变频器 Inverter | 伟创 Wei Chuang |
| 外形尺寸 External dimensions | L1460xW1255xH1450mm |
| 重量 Weight | ≈2500kg |
| 总功率 Total power | 5.5kW |
| 产能 Capacity | 250kg/h |

成型机/ZHJX-CXJ-1000B

FORMING MACHINE /ZHJX-CXJ-1000B

产品说明 > PRODUCT DESCRIPTION

成型机是一款全自动高速糖果成型设备，专为硬糖、软糖及球形糖果设计，集成了伺服驱动、PLC智能控制和食品级输送系统，实现精准定量、高效成型。适用于单粒重3.5g的标准化生产，产能达280kg/h，广泛用于食品工业的规模化制造。

Forming machine is a high-performance automatic forming machine specifically designed for producing hard candy, soft candy, and spherical confectionery products. Incorporating servo-driven technology and PLC intelligent control system, this machine ensures precise dosing and efficient molding with production capacity up to 280kg/h (based on 3.5g per piece).



技术参数 > TECHNICAL PARAMETERS

| | |
|--------------------------|--|
| 主轴电机 Spindle motor | 2.2kW (380V, 50Hz) |
| 送料电机 Feed motor | 0.75kW (380V, 50Hz) |
| 机架 Machine frame | Q235碳钢焊接 Carbon steel welded |
| PLC | 三菱FX系列 Mitsubishi FX Series |
| 变频器 Inverter | 伟创AC70系列 (2.2kW+0.75kW) Wei Chuang AC70 Series (2.2kW+0.75kW) |
| 成型速度 Speed | 45次/分钟 (Cycles/min) |
| 外形尺寸 External dimensions | L1890×W950×H1700mm |
| 重量 Weight | ≈1000kg |
| 总功率 Total power | 4kW |
| 产能 Capacity | 280kg/h (以3.5g/粒计Piece) |

冷却摇床/ZHJX-YC-650

COOLING SHAKER /ZHJX-YC-650



产品说明 > PRODUCT DESCRIPTION

冷却摇床是球形泡泡糖生产线中必不可少的设备，主要用于对成型机成型的糖粒进行冷却和定型。其独特的振动和摇摆式运动设计，能有效促使糖粒均匀运动，避免变形，并确保最终产品形态稳定。设备操作简便，性能稳定，提升生产效率和糖粒的成型质量。

The cooling shaker is an essential component in the production line for spherical bubble gum, primarily used to cool and set the gum pellets formed by the forming machine. Featuring a unique vibration and oscillation movement, it ensures efficient motion of the pellets, preventing deformation and ensuring stable product shape. The equipment is easy to operate, with stable performance, contributing to enhanced production efficiency and consistent pellet quality.

技术参数 > TECHNICAL PARAMETERS

| | |
|--------------------------|--|
| 主机 Main motor | 1.5kW-3台/PC (380V, 50Hz) |
| 机架 Machine frame | Q235扁管焊接 Q235 Flat tube welded |
| 机罩 Machine hood | Q235喷漆 Q235 Spray painting |
| 控制电器 Control appliances | 施耐德 Schneider |
| 变频器 Inverter | 1.5kW-3台/PC (伟创) (Wei Chuang) |
| 输送带 Conveyor belt | 食品带 FDA-approved food-grade belt |
| 冷却介质 Cooling medium | 车间空调风 Workshop air conditioning system |
| 风扇 Cooling fans | 200W-2台/PC, 60W-12台/PC |
| 外形尺寸 External dimensions | L7300×W1060×H1200mm |
| 重量 Weight | ≈1500kg |
| 总功率 Total power | 5kW |

拉条机/ZHJX-LTJ-450

ROPE SIZER/ZHJX-LTJ-450

产品说明 > PRODUCT DESCRIPTION

拉条机（整形机）是硬糖、瑞士糖及夹心泡泡糖生产的关键设备，用于糖条精密整形与均匀拉条，确保糖体尺寸一致、浆料分布均匀，提升产品品质。

The rope sizer is an essential equipment for producing hard candy, Swiss candy, and sandwich bubble gum. It performs precision shaping and uniform sizing of candy strips, ensuring consistent cross-section dimensions and homogeneous syrup distribution for superior product quality.



技术参数 > TECHNICAL PARAMETERS

| | |
|--------------------------|-----------------------------|
| 主电机 Main motor | 1.5kW-5台/PC (380V, 50Hz) |
| 运动模式 Motion mode | 连续性 Continuity |
| 封板 Sealing plate | 304不锈钢 304 Stainless steel |
| 控制电器 Control appliances | 施耐德 Schneider |
| 机架 Machine frame | Q235拼焊 Q235 Welded assembly |
| 外形尺寸 External dimensions | L1150xW750xH1550mm |
| 重量 Weight | ≈700kg |
| 总功率 Total power | 7.5kW |

冷却输送带/ZHJX-SSD-600

COOLING CONVEYOR BELT/ZHJX-SSD-600



产品说明 > PRODUCT DESCRIPTION

冷却输送带是糖果、巧克力及休闲食品生产线的关键冷却设备，专为冲压成型后的糖条设计，通过精准控温与均匀冷却，确保产品达到最佳硬度和口感。采用车间空调风作为冷却介质，节能高效，是现代食品生产的理想选择。

Cooling conveyor belt is an essential equipment for confectionery, chocolate, and snack production lines. Designed to cool stamped candy strips with precise temperature control and uniform cooling, it ensures optimal hardness and texture. Utilizing workshop air conditioning as the cooling medium, it combines energy efficiency with high performance, making it ideal for modern food production.

技术参数 > TECHNICAL PARAMETERS

| | |
|--------------------------|--|
| 主电机 Main motor | 1.5kW-3PC (380V, 50Hz) |
| 运动模式 Motion mode | 连续性 Continuity |
| 封板 Seal plate | 304不锈钢 304 Stainless steel |
| 控制电器 Control appliances | 施耐德 Schneider |
| 机架 Frame | 304 不锈钢焊接 304 Stainless steel welded |
| 风机 Fan | 0.25kW-2PC |
| 冷却介质 Cooling medium | 车间空调风 Workshop air conditioning system |
| 外形尺寸 External dimensions | L6100xW1200xH1600mm |
| 重量 Weight | ≈800kg |
| 总功率 Total power | 5kW |

夹心机/ZHJX-JXJ-300

SANDWICH MACHINE/ZHJX-JXJ-300

产品说明 > PRODUCT DESCRIPTION

夹心机是专业用于生产夹心泡泡糖、夹心瑞士糖及夹心硬糖的核心设备，采用高精度注心系统和智能温控技术，确保馅料均匀分布和产品一致性。设备配备人机界面（HMI），操作简便，适用于多种糖果配方。

The sandwich machine is a professional equipment designed for producing sandwich bubble gum, sandwich swiss candy, and sandwich hard candy. It features a high-precision sandwich system and intelligent temperature control to ensure even distribution of sandwich and consistent product quality. Equipped with an HMI interface, it offers user-friendly operation for various candy recipes.



技术参数 > TECHNICAL PARAMETERS

| | |
|---------------------------------|----------------------------|
| 主电机 Main motor | 1.5kW-1台/PC, 0.75kW-1台/PC |
| 运动模式 Motion mode | 连续式 Continuity |
| 注心系统材质 Sandwich system material | 304不锈钢 304 Stainless Steel |
| PLC | 西门子 Siemens |
| 控制电器 Control appliances | 施耐德 Schneider |
| 控制面板 Control panel | 信捷 Xin jie |
| 保温功率 Thermal power | 9kW |
| 发热管 Heating pipe | 4.5kW-2组/set |
| 机架 Machine frame | 304不锈钢 Stainless Steel |
| 外形尺寸 External dimensions | L1000×W1500×H1500mm |
| 重量 Weight | 650kg |
| 总功率 Total power | 14kW |

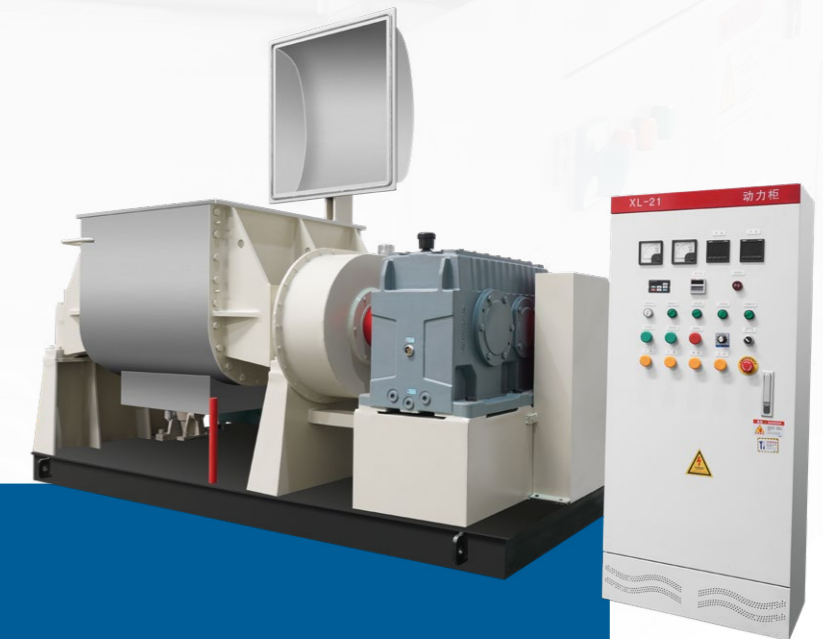
搅拌机/ZHJX-JBJ-500L

MIXER/ZHJX-JBJ-500L

产品说明 > PRODUCT DESCRIPTION

ZHJX-JBJ系列搅拌机分别有500L、300L，是专为胶基、糖果馅料、酱料等高粘度食品设计的高效混合设备，采用大功率电机与特殊桨叶结构，确保物料均匀混合且不粘壁。

The ZHJX-JBJ series mixers are available in 500L and 300L models, are engineered for high-viscosity materials like gum base, candy fillings, and sauces, featuring powerful motors and specialized blades for homogeneous mixing without material sticking.



技术参数 > TECHNICAL PARAMETERS

| | |
|--------------------------|---|
| 主电机 Main motor | 37kW (380V, 50Hz) |
| 减速机 Gearbox | ZLY280 |
| 变频器 Inverter | 40kW |
| 加热功率 Heating power | 9kW |
| 夹套介质 Jacket medium | 锅体夹套导热油加热，温度110°C Heating with thermal oil in the jacket of the pot body (110°C) |
| 转速 Speed | 快桨28r/min；慢桨20r/min (Fast 28r/min; Slow 20r/min) |
| 设计压力 Design pressure | 0.3MPa |
| 外形尺寸 External dimensions | L2300×W1800×H1500mm |
| 重量 Weight | ≈5000kg |
| 总功率 Total power | 55kW |
| 产量 Capacity | 200-300kg/锅 (batch) |

压片机/ZHJX-YPJ-400

TABLET PRESS MACHINE/ZHJX-YPJ-400



产品样板 > PRODUCT SAMPLE



产品说明 > PRODUCT DESCRIPTION

压片机是专为糖果、巧克力和休闲食品行业设计的高效压制成型设备，采用食品级接触材质和Q235高强度机架，确保生产过程的卫生安全与运行稳定。本设备特别适用于各类压片糖果、口含片和巧克力片的精密成型，可完美实现各种复杂形状和克重要求的食品压片生产。

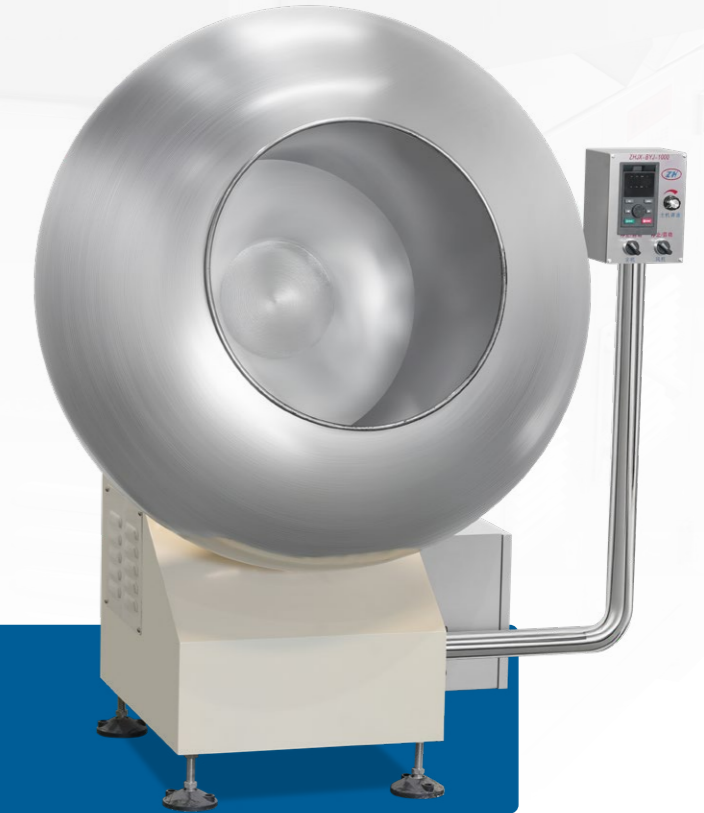
Tablet press machine is specifically engineered for the confectionery, chocolate and snack food industries. Featuring food-grade contact materials and a heavy-duty Q235 frame, it ensures hygienic production and stable operation. Ideal for precision forming of various compressed candies, lozenges and chocolate tablets, capable of producing intricate shapes with accurate weight control.

技术参数 > TECHNICAL PARAMETERS

| | |
|---|--|
| 主电机 Main motor | 1.5kW-6台/PC,0.37kW-2台/PC |
| 机罩 Machine hood | Q235喷漆 Q235 Spray painting |
| 机架 Machine frame | (国标) 5×50×100扁管/2.5×30×30方管/Q235拼焊 GB standard structural steel frame comprising:5×50×100mm flat tubes /2.5×30×30mm square tubes/Q235 welded assembly |
| 压轮和成型轮 Pressure rollers & forming rollers | 材料为45#, 表面镀铬 material is 45# carbon steel, surface treatment: Chrome Plating |
| 控制电器 Control appliances | 施耐德 Schneider |
| 变频器 Inverter | 伟创 Wei Chuang |
| 外形尺寸 External dimensions | L4750×W1200×H1450mm |
| 重量 Weight | ≈2000kg |
| 总功率 Total power | 10kW |

包衣机/ZHJX-BYJ-1000

COATING MACHINE/ZHJX-BYJ-1000



产品说明 > PRODUCT DESCRIPTION

包衣机是专为食品行业设计的高效包衣设备，采用食品级304不锈钢锅体，确保生产过程的卫生与安全。适用于糖果等产品的包衣工艺，提升产品外观与保质期。

The coating machine is designed for the food industries, featuring a food-grade 304 stainless steel drum to ensure hygienic and safe production. Ideal for coating candies, and other products to enhance appearance and shelf life.

技术参数 > TECHNICAL PARAMETERS

| | |
|--------------------------|----------------------------|
| 主电机 Main motor | 1.5kW-1台/PC (380V, 50Hz) |
| 控制电器 Control appliances | 施耐德 Schneider |
| 变频器 Inverter | 伟创 Wei Chuang |
| 风机 Fan | 0.37kW-1台/PC |
| 锅体材质 Body material | 304不锈钢 304 Stainless steel |
| 机架 Machine frame | Q235焊接 Q235 Welded |
| 外形尺寸 External dimensions | L1200×W1000×H1500mm |
| 重量 Weight | ≈300kg |
| 总功率 Total power | 2kw |
| 产量 Capacity | 60kg /锅 (batch) |

化糖锅/ZHJX-HTG-500

SUGAR MELTING POT/ZHJX-HTG-500

产品说明 > PRODUCT DESCRIPTION

化糖锅是专为糖果、巧克力及食品行业设计的高效化糖设备，采用食品级304不锈钢接触面，确保安全卫生。适用于糖浆、糖膏的精确加热与融化，提升生产效率和产品质量。

Sugar melting pot is designed for the confectionery and food industry, featuring food-grade 304 stainless steel contact surfaces for safe and hygienic operation. Ideal for precise heating and melting of syrups and pastes, enhancing production efficiency and product quality.



技术参数 > TECHNICAL PARAMETERS

| | |
|-----------------------------|------------------------------------|
| 主电机 Main motor | 3kW-1台/PC (380V, 50Hz) |
| 发热管功率 Heating element power | 6kW-3条/Tubes |
| 运动模式 Motion mode | 连续性 Continuity |
| 锅体规格 Pot body specification | 3mm 304不锈钢 3mm 304 Stainless steel |
| 夹层规格 Jacket specification | 2mm 304不锈钢 2mm 304 Stainless steel |
| 锅体容量 Pot capacity | 500L |
| 外形尺寸 External dimensions | L950×W950×H1400mm |
| 重量 Weight | ≈700kg |
| 总功率 Total power | 21kW |

粉碎机/ZHJX-FSJ-40B

CRUSHER/ZHJX-FSJ-40B

产品说明 > PRODUCT DESCRIPTION

粉碎机的主要功能是将颗粒状砂糖破碎成粉末状，其粉碎粒度根据不同糖果的要求，通过配备相应规格的筛网进行调节。转子直径(mm)分别有130、150、220、250、350、500、550、750可选择。

The main function of the crusher is to crush granulated sugar into powder; its coarseness is determined by the requirements of various candies, with suitable sieves. Rotor diameter (mm) options: 130, 150, 220, 250, 350, 500, 550, 750.



技术参数 > TECHNICAL PARAMETERS

| | |
|--|----------------------------|
| 转子直径 Rotor diameter | 500mm |
| 电机功率 Motor power | 22kW |
| 涡轮转速 Turbo speed | 3250转/分钟 (r/min) |
| 粉碎细度 Crushing fineness | 20~325目/Mesh |
| 管道及集料器材质 Pipes and collectors material | 304不锈钢 304 stainless steel |
| 外形尺寸 External dimensions | L6250×W1200×H4000mm |
| 重量 Weight | 830kg |
| 产量 Capacity | 30~1200kg/h |